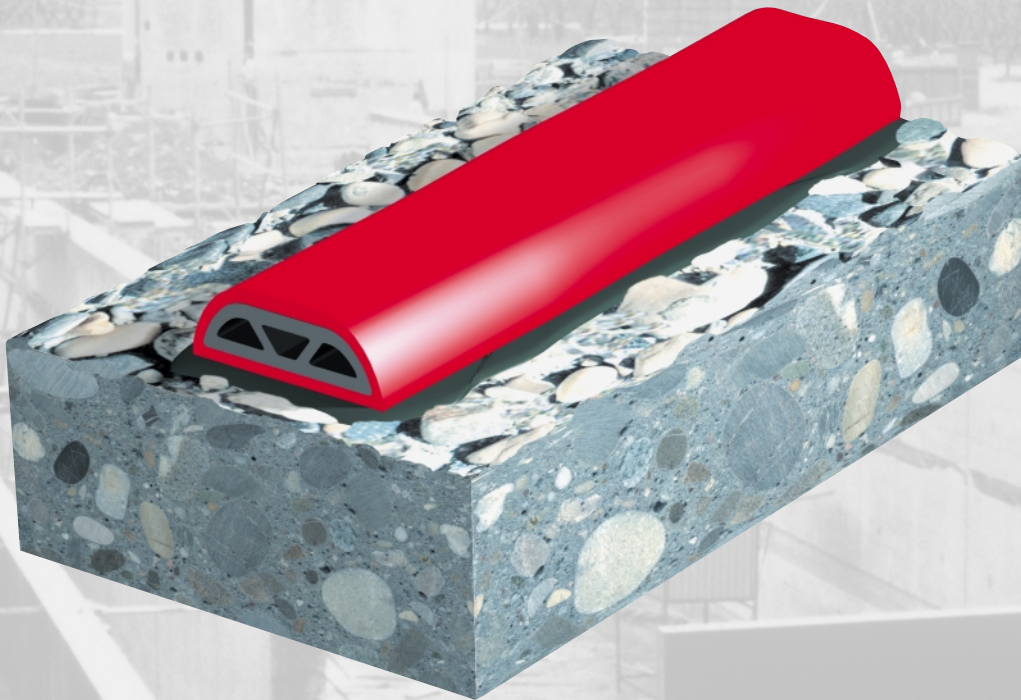


SikaSwell[®]-P Profiles

Water Swellable Sealing Profiles for Construction Joints and Penetrations



- ▲ **Swells in contact with water**
- ▲ **Easy and secure application**
- ▲ **Double swelling action: seals in two phases**

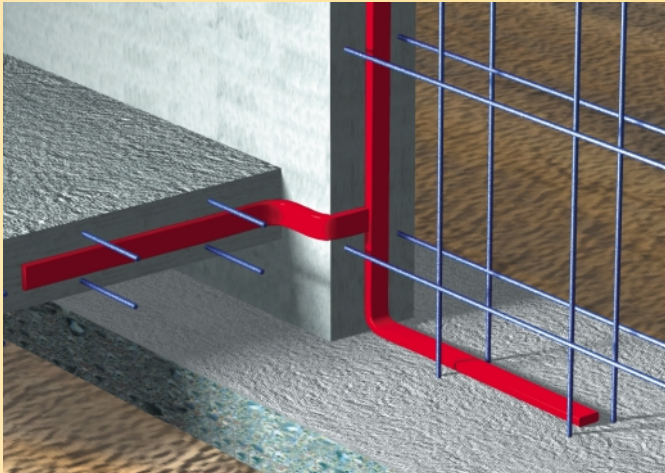
SikaSwell®-P Profiles

The new Sika Solution for Watertight Construction Joints

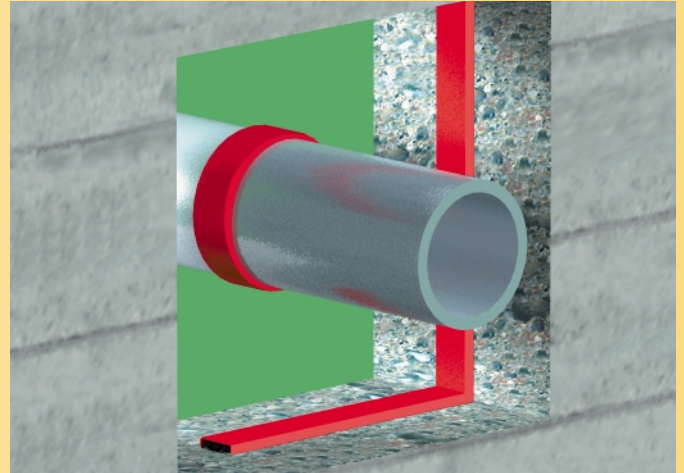
Typical Applications for SikaSwell®-P Profiles

- ▲ Sealing of daywork joints (wall/wall, wall/floor, floor/floor)
- ▲ Connecting new to existing construction
- ▲ Sealing of precast concrete culverts and manhole rings
- ▲ Sealing of penetrations – pipe entries, utility services etc.

Construction Joints



Penetrations



Function

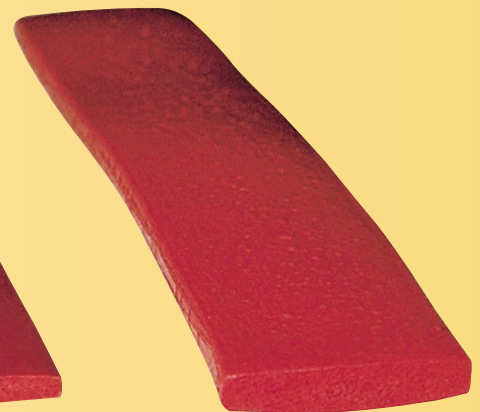
Joint sealing profiles which swell in contact with water



After contact with water the profile swells. The resultant volume greatly increases the length of path, and acts as a barrier for any possible water penetration.



SikaSwell®-2003
Before water exposure



After water exposure

Advantages

- ▲ Swells in contact with water
- ▲ Permanently water resistant
- ▲ Highly elastic
- ▲ Easy, secure application
- ▲ Needs no curing time
- ▲ Pretreated to avoid premature swelling on site

Limitations

- ▲ Not suitable for movement joints
- ▲ Cannot be injected
- ▲ Although SikaSwell-P has been tested to water pressures above 3.5 bar, due to the limited sealing distance, it is not normally recommended to water pressure higher than 0.3 bar.
- ▲ In case of a rapidly rising ground water table, no instant or immediate waterproofing or sealing is possible due to the time required for the profile to swell.

The new Sika Hybrid Technology – Dual Effects!




Double Action Swelling Profiles

Hybrid types: 2010H and 2507H

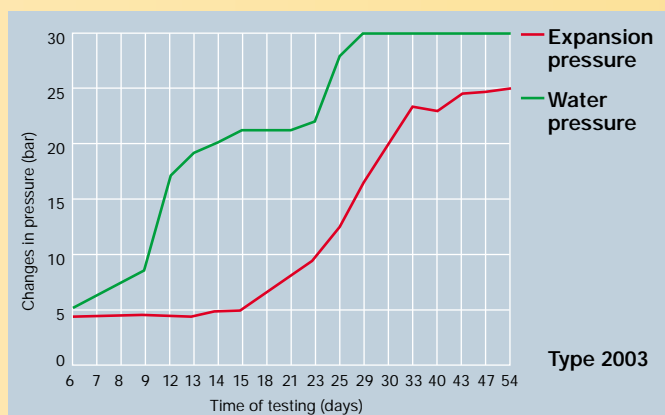
▲ Swellable part: black inner core

▲ Highly swellable part: red outer covering

Profile Types

Types	Width (mm)	Thickness (mm)	Original dimensions before swelling	Description	Packaging (m/box)
2003	20	3		Highly swellable profile	10 140
2010H	20	10		Hybrid profile with stabilizing inner core	50
2507H	25	7		Hybrid profile with pressure relief chambers	10 50

Development of Expansion Pressure in Swelling



Testing for **SikaSwell®** expansion pressure development and pressure resistance according to STUVA

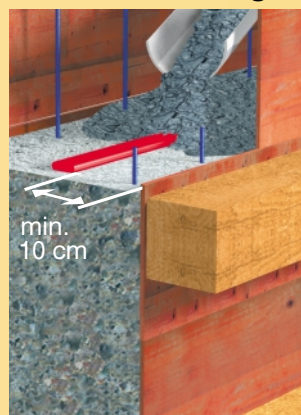
Installation / Fixing Detail

Adhesive Selection

Substrate The substrate should be surface dry, with no standing water, free of dust and loose particles, cement laitance, voids and protruding coarse aggregate.

Fixing Dependent on substrate type and condition:
Smooth dry substrate
 Use **Sika® Contact Adhesive**
Rough, dry or surface dry substrate
 Use **SikaSwell®-S** extrudable, swelling sealant/adhesive

Profile Positioning



Profile Adhesive Application



SikaSwell®-P Profile fixing with **SikaSwell®-S**

SikaSwell®-P Profiles

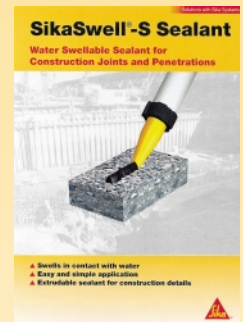
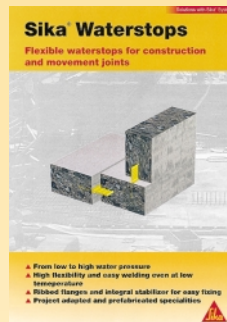
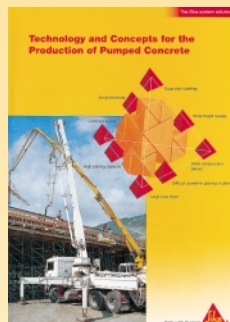
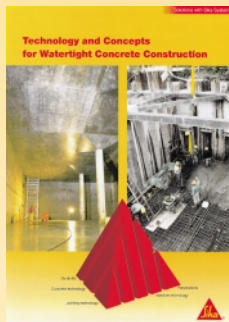
Water Swellable Sealing Profiles for Construction Joints and Penetrations

Technical Data

▲ Basis	Polyolefine-rubber combined with water-soluble resins which swell (expand) in contact with water.
▲ Colours	Swellable part: black inner core Highly swellable part: red outer covering
▲ Shore A hardness	50–65
▲ Tensile strength at 50% elongation	□ 0.6 N/mm ²
▲ Elongation at break	> 150 %
▲ Volume Expansion	The profiles have a volume increase of minimum 150% if stored in tap water at 23 °C for 14 days. In salty or contaminated water the swelling properties may be reduced and /or delayed.
▲ Storage/Shelf life	Stored in cool and dry conditions, shelf life is at least 12 months from date of supply.
▲ Packaging	Rolls packed in cardboard boxes, quantity depending on type of profile, consult technical data and price list.

For additional information consult Product Data Sheet SikaSwell-P-Profiles.

Also Available from Sika



Your Local Sika® Company

The information, and, in particular, the recommendations relating to the application and end-use of Sika products, are given in good faith based on Sika's current knowledge and experience of the products when properly stored, handled and applied under normal conditions. In practice, the differences in materials, substrates and actual site conditions are such that no warranty in respect of merchantability or of fitness for a particular purpose, nor any liability arising out of any legal relationship whatsoever, can be inferred either from this information, or from any written recommendations, or from any other advice offered. The proprietary rights of third parties must be observed. All orders are accepted subject to our current terms of sale and delivery. Users should always refer to the most recent issue of the Product Data Sheet for the product concerned, copies of which will be supplied on request.

