



# SIKA AT WORK

## Park Hotel, Skopje

WALL COATING: SikaDecor®

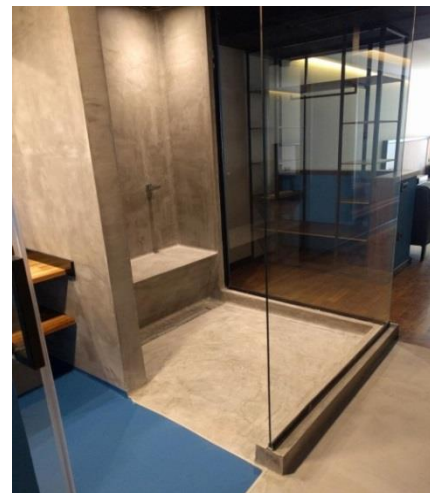
FLOORING: Sika® ComfortFloor®



BUILDING TRUST



# FLOORING, PARK HOTEL, SKOPJE



## PROJECT DESCRIPTION

Park Hotel 5\* forms part of the complex Park Residence. It stretches over a 7.000 m<sup>2</sup> area and is located at the downtown city of Skopje, just a few meters from the City Park, near the river Vardar. The hotel has 80 rooms and offers also extra facilities, such as restaurant, conference room, spa, swimming pool, gym, e.t.c.

## APPLICATION DEMANDS

The aesthetics of the architectural design dictated a very specific aspect for the bathrooms of the rooms, that had to be unique and combine comfort and modern design. The overall environment that the space would create should provide a residential sensation together with a spicy and intellectual perspective.

## SIKA SOLUTION

Two Sika systems were selected: **SikaDecor®** for the walls and floors of the shower area – a decorative microcement system - and **Sika® ComfortFloor®** – a highly aesthetic system - for the rest of the bathroom floor. The shower area and entrance hall covered with **SikaDecor®** system was 1.600m<sup>2</sup> and the rest of the bathroom floor area covered with **Sika® ComfortFloor®** was 500m<sup>2</sup>.

**Walls:** The system build up comprised of:

- **SikaTop®-10**, water based primer
- **SikaDecor®-803**, levelling mortar, in which a special alkali resistant fiber mesh was embedded for reinforcement
- **SikaDecor®-801 Nature**, a 2-component microcement with pigments, applied at 2 layers
- **Sikagard®-907** as surface porous sealer
- **Sikafloor®-304 W**, a 2-part water based, very low VOC, polyurethane, matt seal coat.

**Floors:** **Sika® ComfortFloor®** is a system, that offers comfort during walking, is extremely easy to clean and maintain, offers warm sensation and is UV and colour stable. The system comprises of:

- The 2-component, epoxy primer **Sikafloor®-161** was applied to seal the porosity of the surface
- The self-levelling, PU based, elastic, self-smoothing comfort floor **Sikafloor®-330**
- The 2-component, low VOC, matt, colored seal coat **Sikafloor®-305W**, at RAL 3003 (red), RAL 5019 (blue), RAL 1023 (yellow).

## PROJECT PARTICIPANTS

Owner: **Park Residence**

Designer: **Stone Design, Skopje**

Supervisor: **Megaron Engineering, Skopje**

Main Contractor: **Alding Engineering, Skopje**

Applicator: **Atlas Engineering,**

**Sika® ComfortFloor®** is a highly elastic polyurethane self-smoothing flooring system, especially designed for decorative areas where high comfort under feet, and soft footfall are required.

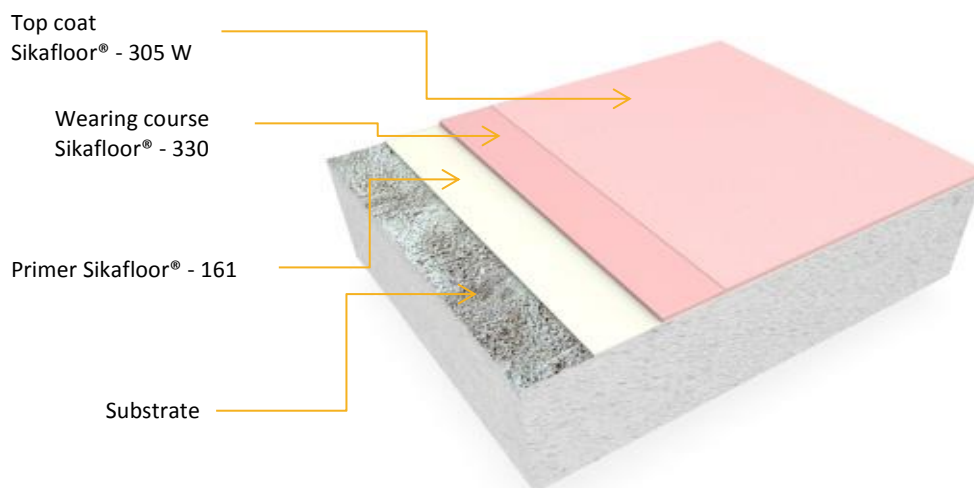
The system is composed of a highly elastic, crack bridging polyurethane base coat which fulfils the stringent demands for low VOC emitting products, like the German AgBB, California Department of Public Health rule 01350 and fulfils French labelling.

**Characteristics / Advantages:**

- Highly decorative
- Soft footfall
- Comfortable
- Odourless
- Good resistance to fire
- Low VOC-content
- Silky Matt finish
- Good mechanical and abrasion resistance
- Easy application
- Easy to maintain

**Sika® ComfortFloor®** system is also available in the **Pro** version, which combines the use of an elastic, shock absorbent pad (total system thickness 8 mm).

Below we present you the system build-up without the shock-pad (3 mm thickness):



**SikaDecor®** system is a trowel applied, high quality cementitious based system. It comprises of a primer, cementitious smoothing & decorative layers and seal coat.

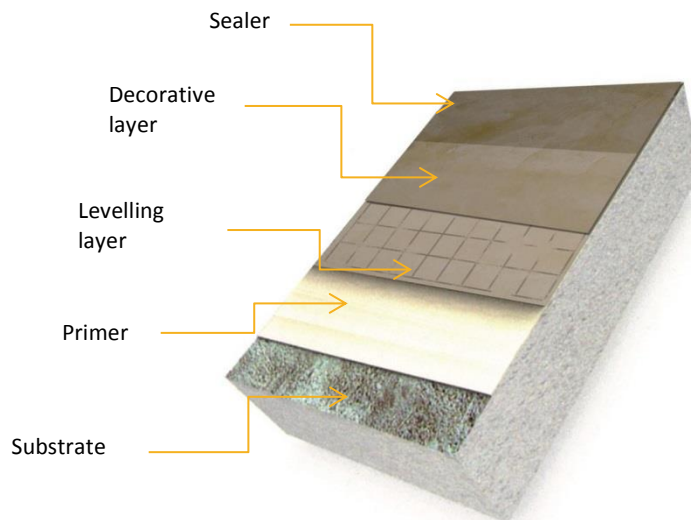
The cementitious layers consist of specially developed microcements, enriched with polymers, resins & aggregates.

**Characteristics / Advantages:**

- Low application thickness (just 2-3 mm) and therefore does not affect the already designed elements.
- The weight gain for the calculation of the bearing load is negligible.
- By mixing with liquid SikaDecor® Color pigments, large variety of colour shades can be produced.
- The combination of colour schemes offers the possibility of design imprinting (e.g. company logo).
- Provides uniform surface without joints.
- Good mechanical strengths (compressive, flexural, abrasion)
- UV resistant
- Suitable for areas with high relative humidity

The system comprises of:

- Water based primer SikaTop®-10 or Sika® Primer-11 W
- Levelling layer SikaDecor®-803 Nature in which the alkali-resistant fiber net Sika® FiberNet is embedded
- Decorative layer of microcement SikaDecor®-801 Nature, with the possibility of pigment mixing
- Sealing coat with polyurethane, water-based coatings Sikafloor®-304 W (2-component) or Sikafloor®-417 W (1-component)



Our most current General Sales Terms shall apply.

Please consult the most recent Product Data Sheets prior to any use and processing.

